

Born to be Fast, Now Even Faster

For Real Sport

Boasting faster lap times and an extended tyre life, the **POTENZA RE-71RS** tyre is now faster than before. This signature sports tyre delivers a thrilling steering experience through superior cornering grip performance, precise handling, and enhanced durability.

1 Exceptional Dry Grip for Track Driving

The contact surface between the tyres and the road surface has been refined to ensure the maximum contact area even during vehicle turning. Also, a high grip polymer that grip deeply into the road surface have been adopted.

2 High Speed Stability and Steering Precision

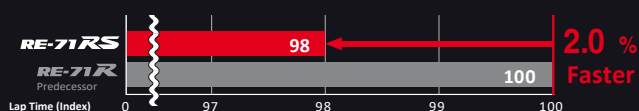
Low Angle Grooves and Optimized Main Grooves enhance control, delivering ultimate cornering stability.

3 Improve Wear Life Performance

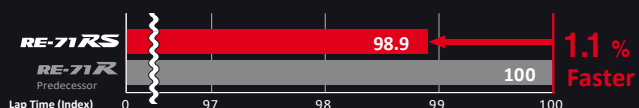
Asymmetrical tread profile and slick shoulder block improve wear life and durability for ultimate performance.

Both the Fastest and the Average Laptime have been **GREATLY IMPROVED**.

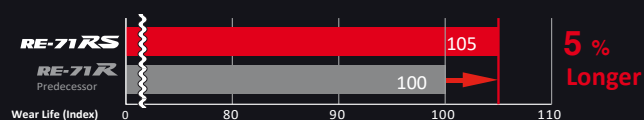
● Fastest Lap Time ^{※1}



● Average Lap Time ^{※1}



● Wear Life ^{※2}



※1 [Test Conditions]

- Tyre Size: 265 / 35R18 97W XL (Air Pressure: 200kPa)
- Test Vehicle: SUBARU BRZ DBA-ZC6 2,000cc rear-wheel drive
- Test Location: Tsukuba Circuit Course 2000
- Driver: Bridgestone professional driver

※2 [Test Conditions]

- Tyre Size: 215 / 45R17 91W XL (Air Pressure: 240kPa)
- Test Vehicle: Toyota 86 DBA-ZN6 2,000cc rear-wheel drive
- Test Distance: 8,000 km
- Rotation: Implemented every 2,000 km

POTENZA RE-71RS

NEW



POTENZA RE-71RS

The Art of Achieving Both High Cornering Grip Performance and Long Life

Asymmetric Tread Pattern

Each area across the width of the tread has been optimised to maximise the contact patch. Contact pressure is also more uniform which maximises grip and wear life.

Low Angle Grooves

By arranging grooves at a low angle, lateral rigidity is increased, resulting in higher steering response and grip during cornering.

Optimised Main Grooves

The two wide main grooves on the inside of the tyre ensure high drainage for strong wet performance. The inside grooves allow tread rigidity for high grip when cornering.

Slick Shoulder Block

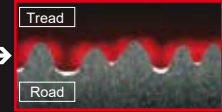
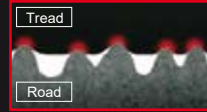
The large area outside shoulder block raises the cornering limit.

IN side

OUT side

RE-71R predecessor

RE-71RS



Higher Contact Pressure

11% Contact Area Increase



100

111

RE-71RS has wider contact area and grip road surface by whole tread area.

[Test Conditions]

Tyre Size: 215/45R17 91W Air Pressure: 240kPa

Test Location: Tyre dynamic contact surface analysis device in our technical centre

Rim	Series	Size	Loading/Speed Index
20	35	285/35R20	100W
	40	255/40R20	097W
19	30	275/30R19	092W
		265/30R19	089W
	35	285/35R19	103W XL
		275/35R19	096W
		255/35R19	096W XL
		245/35R19	093W XL
		235/35R19	091W XL
		225/35R19	088W XL
	40	245/40R19	098W XL
		225/40R19	093W XL
18	30	295/30R18	094W
		285/30R18	093W
	35	295/35R18	099W
		275/35R18	095W
		265/35R18	097W XL
		255/35R18	094W XL
		245/35R18	092W XL

Rim	Series	Size	Loading/Speed Index
18	40	255/40R18	099W XL
		245/40R18	097W XL
		235/40R18	095W XL
		225/40R18	092W XL
		215/40R18	089W XL
	45	245/45R18	100W XL
17	40	255/40R17	098W XL
		245/40R17	091W
		235/40R17	090W
		215/40R17	087W XL
16	50	225/50R16	092V
		205/50R16	087V
		195/50R16	084V
	55	205/55R16	091V
		195/55R16	087V
15	50	225/50R15	091V
		205/50R15	086V
		195/50R15	082V
		165/50R15	073V
	55	195/55R15	085V
		185/55R15	082V

CAUTION

Replacing Tyres

- When replacing tyres, it is advisable to select tyres based on the sizes, ply rating and maximum load capacity of the original tyre.
- Check rims for any irregularities or damages before assembling.
- When mounting tyres, fitting the beads and inflating the tyres must always be conducted in the safety cage to protect yourself from tyre explosions.
- To ensure that the tyre is properly mounted, the distance between the rim line and rim flange should be uniform around the circumference of the rim.

Mixing of Tyres

- The mixed application of different tyre types and / or tyre sizes on the same axle can adversely affect manoeuvrability and stability because of the differences in tyre performance characteristics and tyre deformation.

Tyre Storage

- When storing tyres, avoid direct sunlight, ozone, moisture, petroleum products and extremely high ambient temperatures.

Tyre Inflation Pressure

- Most tyre troubles are caused by incorrect inflation pressure. This seriously affects driving performance and tyre life.
- Adjust pressure when tyre is cool.
- When returning to a highway after desert driving at deflated pressure, readjust the pressure to normal at the earliest possible chance.
- Avoid driving at high speeds at under-inflation pressure.

Upsizing Tyres

- Wider tyres not only make for better performance, but also provide a sportier look. But before you upsize, take note of some important pointers. The replacement tyre you choose must keep the overall diameter, and exhibit the same or higher Speed Symbol (SS) / Load Index (LI) of the original tyre as far as possible. An allowance of + or -3% of the original is considered acceptable. This is to ensure your speedometer remains accurate, and to prevent the damage that can be inflicted on an oversized tyre when it rubs against the wheel arch as your car turns.

The sizes and specifications shown on this document are subject to change without notice.

Sole Distributor :



同成有限公司
TONG SENG COMPANY, LTD.

www.tongseng.com.hk Tel.: 2525 6313

為確保行車安全，請於購買時認明銀色行貨招紙及胎側行貨標籤

